

# PRODUCT BULLETIN

## 4 THE PURAFIL ESD MOLE™ MANHOLE SCRUBBER




THE PURAFIL ESD MOLE™ MANHOLE SCRUBBER effectively removes odors emanating from street-level sewer manholes. The collar of the scrubber rests just below the manhole cover. Odors enter the MOLE™ through the bottom of the unit and flow upwards through two passes of Odormix™ SP (patent-pending) media, where they are absorbed and chemically converted to non-organic salts.



THE PURAFIL ESD MOLE™ MANHOLE SCRUBBER



PURAFIL ESD MOLE MANHOLE SCRUBBER

### SYSTEM ADVANTAGES:

**CONSTRUCTION:** The MOLE™ is constructed of stainless steel to ensure a long service life. Housed within the unit are two MediaSAKs containing Odormix™ SP media. The unique design of the MediaSAK prevents air bypass and ensures a high removal efficiency.

**MAXIMUM AIRFLOW:** The MOLE™ passively removes odors at airflow rates up to 50 cfm. The bottom of the unit is 100% open for maximum allowable airflow through the media bed.

**EASY MEDIA REPLACEMENT:** The MOLE™'s Odormix™ SP media is contained in two, MediaSAKs, which are layered vertically within the unit. MediaSAKs are factory-filled, so installation and replacement is an in-and-out job.

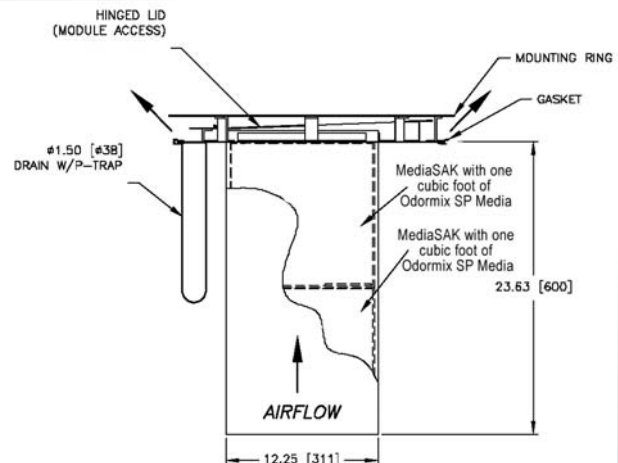
**HIGH EFFICIENCY:** The MediaSAK holds one cubic foot of dry-scrubbing media. The unique design of the MediaSAK allows for easy replacement while preventing air bypass.

**AIR FILTRATION MEDIA:** At the heart of Purafil ESD's high-efficiency odor control systems are dry chemical, air filtration media. While hydrogen sulfide is the primary culprit in sewer applications, sulfur dioxide, mercaptans, aldehydes, and volatile organic compounds (VOCs) are also responsible for odor complaints. The unit's Odormix™ SP media effectively removes all sewer odors. Most importantly, Odormix™ SP can accommodate fluctuating odor concentrations and airflows, as well as continuous air streams. Other benefits of Odormix™ SP media are as follows:

- UL Classified Class 1
- New and spent media are non-toxic, non-hazardous, and landfill disposable

### MOLE™ SPECIFICATIONS

- Collar Diameter: 22", 24", 32"\*
  - Height: 23.63"
  - Width: 12.25"
  - Depth: 12.25"
  - Weight with Media: 112 lbs
  - Pressure Drop: 1.00 IWG
  - Airflow Rate: 50 max. cfm
  - Ambient Temperature: -4° - 125° F
  - Relative Humidity: 10 - 95%
- \* Custom sizes are also available.



**THE MOLE MANHOLE SCRUBBER**

**LET US SIZE YOUR MANHOLE SCRUBBER TODAY! SIMPLY COMPLETE THE FORM BELOW AND FAX TO PURAFIL (770) 263-6922, ATTENTION: ENVIRONMENTAL SYSTEMS DIVISION.**

**NAME:** \_\_\_\_\_

**DATE:** \_\_\_\_\_

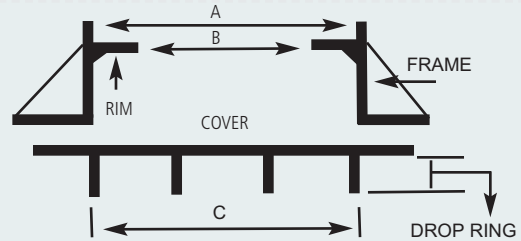
**PHONE:** \_\_\_\_\_

**FAX:** \_\_\_\_\_

**EMAIL:** \_\_\_\_\_

**REQUIRED MEASUREMENTS**

- A:** Manhole Frame Diameter (flat bearing surface)
- B:** Inside Frame Diameter (clear opening)
- C:** Drop Ring Diameter
- D:** Drop Ring Depth (from cover underside, outside edge)



FOUNDRY & CASING #	REQUIRED MEASUREMENTS				QTY
	A	B	C	D	
(example)	25"	24-1/4"	22"	2"	10

**CAUTION:** Please be aware that the manhole scrubber is approximately 25" deep and may interfere with your manhole steps. Please contact Purafil at 1-800-222-6367 to discuss further options available.